



MONTHLY MEMBERSHIP PROGRESS REPORT

District 2 A1

Results as of: 9/30/2016

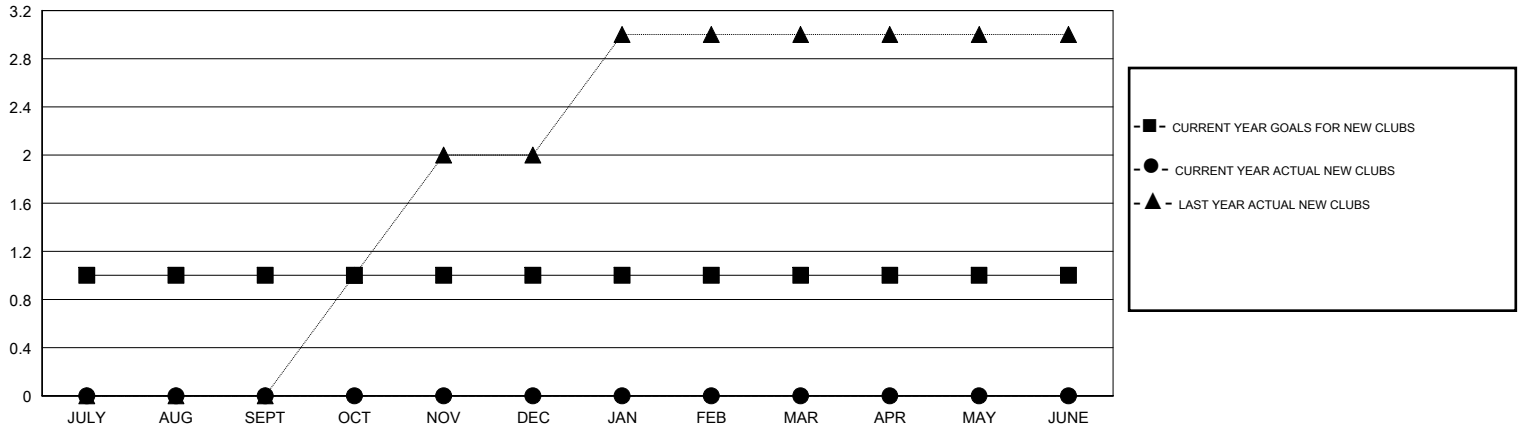
GMT: HAL GRIFFIN

LOCATION TEXAS

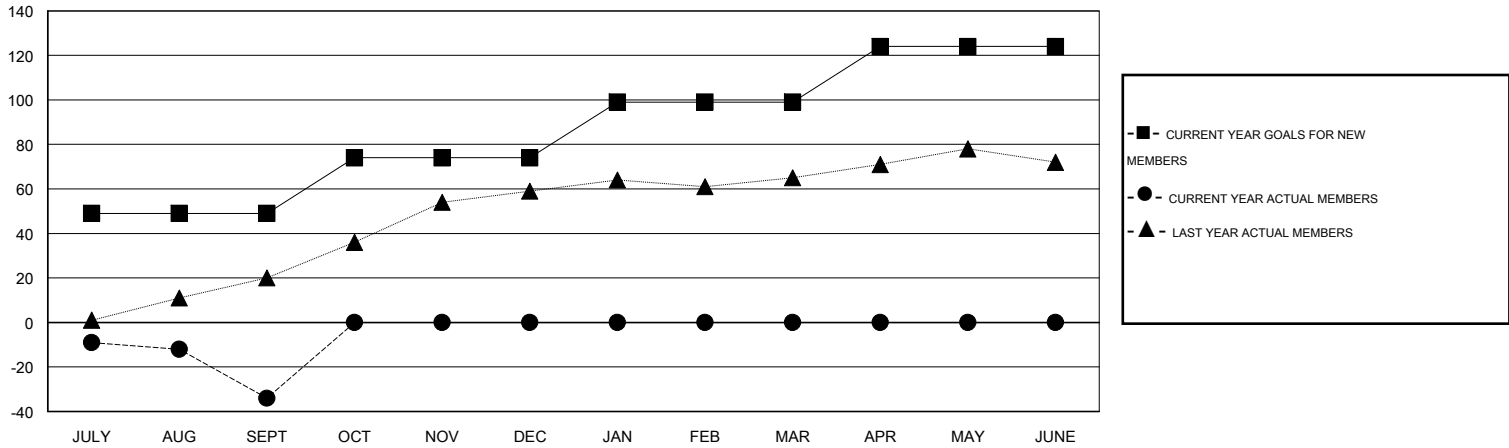
GMT CA 1

Clubs					Members				
RESULTS FOR 2016-2017					RESULTS FOR 2016-2017				
QUARTER	NEW CLUB GOAL	NEW CLUBS	DROPPED CLUBS	NET GAIN/LOSS	QUARTER	NEW MEMBER GOAL	CHARTER AND NEW MEMBERS ADDED	DROPPED MEMBERS	NET GAIN/LOSS
JULY/AUG/SEPT	1	0	0	0	JULY/AUG/SEPT	49	48	82	-34
OCT/NOV/DEC	0	0	0	0	OCT/NOV/DEC	25	0	0	0
JAN/FEB/MAR	0	0	0	0	JAN/FEB/MAR	25	0	0	0
APR/MAY/JUNE	0	0	0	0	APR/MAY/JUNE	25	0	0	0

GOALS AND ACTUAL NEW CLUBS CUMULATIVE



GOALS AND ACTUAL MEMBERS CUMULATIVE



DROPPED CLUBS: 0	19 CLUBS OF 49 ADDED 1 OR MORE NEW MEMBERS	<u>GENDER DISTRIBUTION</u>	
<u>DROPPED MEMBERS</u>		MALE	936 (71.67%)
DECEASED	CLICK HERE FOR HEALTH ASSESSMENT DATA	FEMALE	370 (28.33%)
CLUB CANCELLED		FAMILY UNIT MEMBERS	167
OTHER		HEAD OF HOUSEHOLD	82
TOTAL		NON-HEAD OF HOUSEHOLD	85